

wellgo

www.wellgo.com.tw

2011



Quick Release Device



2009 TBEA Creative Bicycles, Parts and Accessories Competition Award.

WELLGO QRD is available for many of our new and existing pedals in every category.

No tools are required and pedals can be removed with a flick of a finger.

The QRD design offers portability and additional security for bicycles when they are parked.

The ability to quickly remove the pedals without any tools saves time when storing your bike in tight spaces (e.g. car, closet, box).

WELLGO offers turn-key solutions for all your pedal needs.

WELLGO – YOUR ONLY SOURCE FOR PEDALS





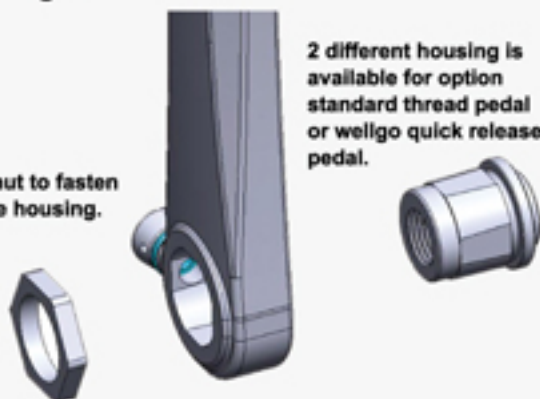
Quick Release Device

QRD crank's modular design offers more options for OEM and expanding the choices for the consumer.

FEATURES

Modular structure: 2 housings types for standard pedal thread or WELLGO QRD pedal axle. Single fastening nut to swap housing insert.

Use a nut to fasten the axle housing.



2 different housing is available for option standard thread pedal or wellgo quick release pedal.

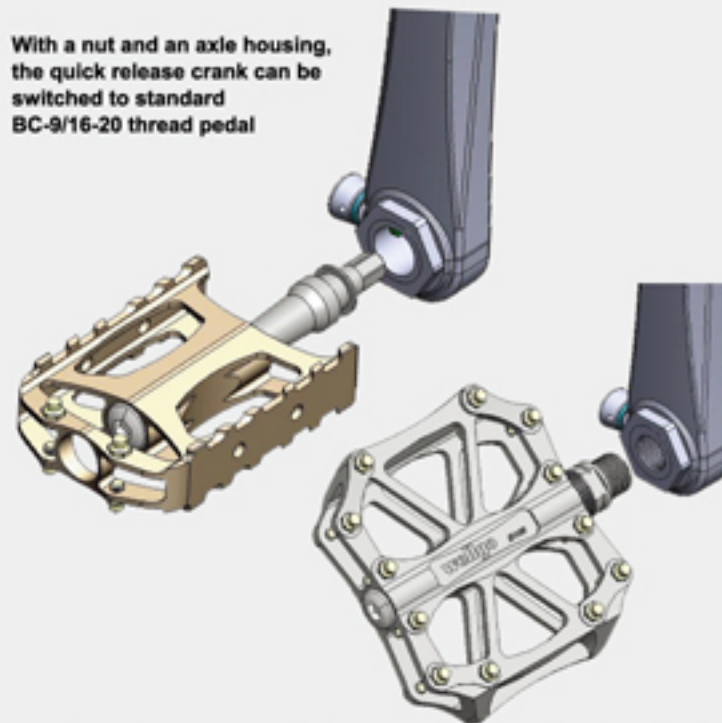
One-piece Constructure: to make the quick release crank and the pedal function as one.

Comfort: The new design has no interference on the platform surface.

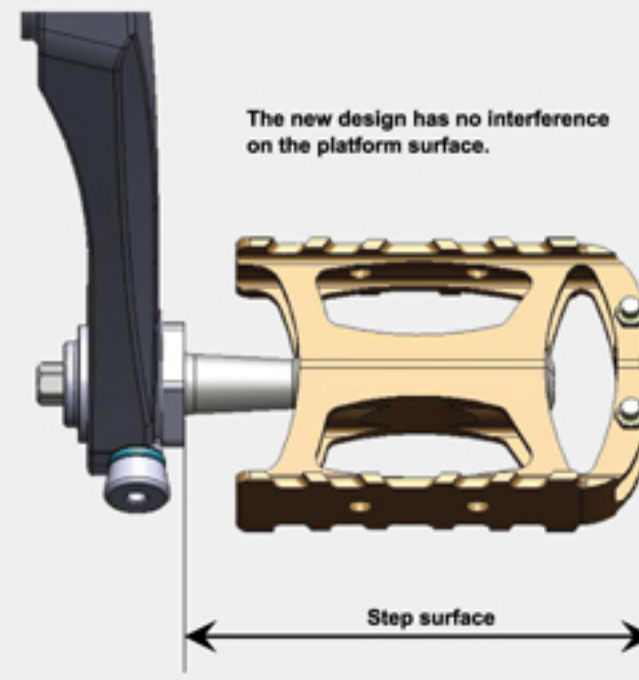
Reliability: one-piece design to make sure the security.



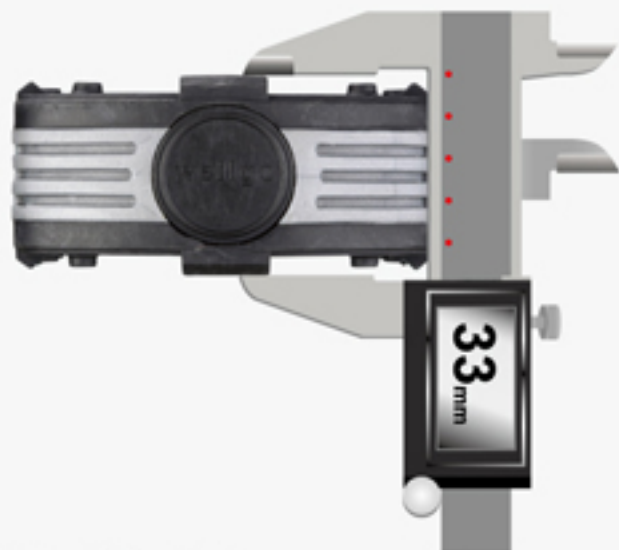
With a nut and an axle housing, the quick release crank can be switched to standard BC-9/16-20 thread pedal



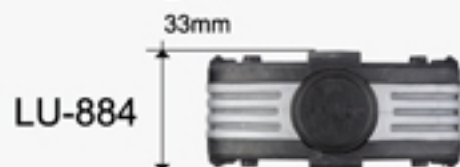
The new design has no interference on the platform surface.



USED TO



City / Trekking



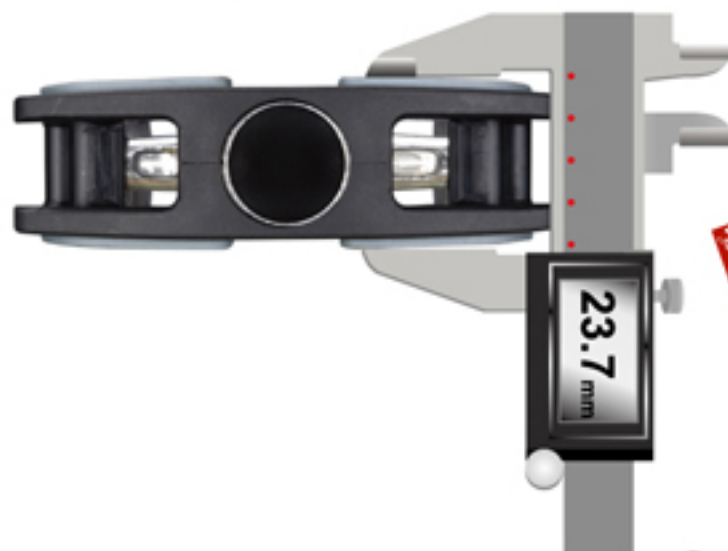
MTB



BMX



FACTORY FOCUSED THIN & LIGHT



NEW



C021



M-21



B087



CLEAT APPLICATION TABLE

[illegible]

2011 TABLE OF CONTENTS



01 NEW

05 MTB CLIPLESS

06 MTB

08 ROAD CLIPLESS

09 ROAD

11 TRACK

12 CITY / TREKKING

16 PLATFORM

24 FOLDING / EXERCISER

25 ACCESSORIES

28 BASH GUARD





- 1 Use 3 mm adjusted tool, variable levels tension adjusted.
- 2 Patent bending platform design to fit the foot shape with curve surface which meets body geometry concept.

R120B ROAD

BODY: Aluminum, barrel silver
SPINDLE: Cr-Mo CNC machined **BEARING:** DU / Sealed
CLEAT: 98A or Shimano 51 compatible
SIZE: 85 x 84 x 33.5(mm) **WEIGHT:** 362 g/pr
OPTION: Ball bearing version as R120
ORIGIN: Taiwan



- 1 Dual-sided with patent bending platform shape, simple elegant and lightweight design
- 2 Grease hole design to provide users to maintain pedal for the best condition

R146 ROAD

BODY: Aluminum, barrel silver
 Magnesium body, painted color
SPINDLE: Cr-Mo CNC machined **BEARING:** DU / Sealed
SIZE: 85 x 86 x 32(mm)
WEIGHT: Mg: 266 g/pr / Al: 310 g/pr
ORIGIN: Taiwan



M142 MTB

BODY: Aluminum 6061 extruded, CNC machined
SPINDLE: Cr-Mo CNC machined **BEARING:** DU / Sealed
SIZE: 100 x 60 x 24.5(mm) **WEIGHT:** 236 g/pr
ORIGIN: Taiwan



- 1 For City Bike, with serrated pattern to offer better slip resistant
- 2 Alloy cage over-molded with durable kraton material which could prevent shoes away from scratching.

C145 TREKKING

BODY: Aluminum, barrel silver
CAGE: Aluminum overmolded kraton
SPINDLE: Cr-Mo
SIZE: 96 x 70.5 x 24(mm) **WEIGHT:** 284g/pr
OPTION: Sealed bearing as C145B
ORIGIN: Taiwan & China



- 1 Built-in reflector makes the pedal looks more simple and elegant .
- 2 Grease hole design for easy maintenance.

M138 MTB

BODY: Aluminum, ED black
 Magnesium body, painted color
SPINDLE: Cr-Mo CNC machined **BEARING:** DU / Sealed
SIZE: 102 x 68 x 29(mm) **WEIGHT:** Mg: 238 g/pr / AL: 288 g/pr
ORIGIN: Taiwan



- 1 Patent on length-changing design, user could change the pedal size to meet own needs
- 2 Grease hole design for easy maintenance

M151

BODY: Aluminum 6061 extruded, CNC machined

CAGE: Aluminum, anodized

SPINDLE: Cr-Mo CNC machined **BEARING:** DU / Sealed

SIZE: 107 x 60 x 22(mm) **WEIGHT:** 270 g/pr

ORIGIN: Taiwan



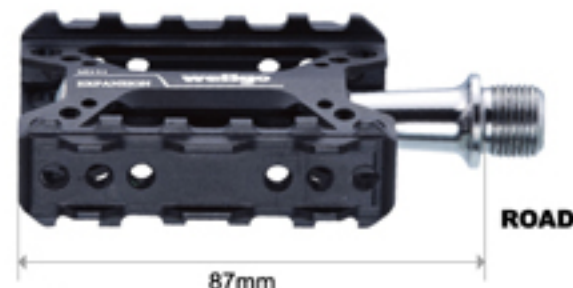
MTB

99mm



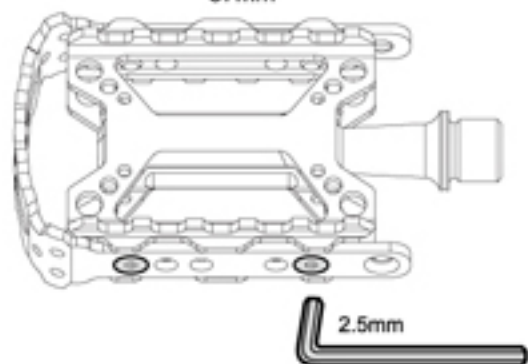
CITY

107mm



ROAD

87mm



2.5mm



- 1 Unique embossed pattern makes a better traction.
- 2 Options in Translucent, UV and Nylon Fiber material.
- 3 Available with strap design.

B109P PLATFORM

BODY: Nylon with fiber as B109N, translucent color as B109P

SPINDLE: Cr-Mo **SIZE:** 111 x 102.5 x 30(mm)

WEIGHT: B109P: 370 g/pr / B109N: 398 g/pr

ORIGIN: Taiwan



B109

PLATFORM

B109: 330 g/pr (Mixed)



Black + White



185C + White



3415C + White



281C + White



1365C + White



1675C + 440C



B124 PLATFORM

BODY: Aluminum 6061 extruded, CNC machined
SPINDLE: Cr-Mo CNC machined **BEARING:** DU / Sealed
SIZE: 107.3 x 100 x 25.7(mm) **WEIGHT:** 376 g/pr
PIN: Replaceable pin **ORIGIN:** Taiwan



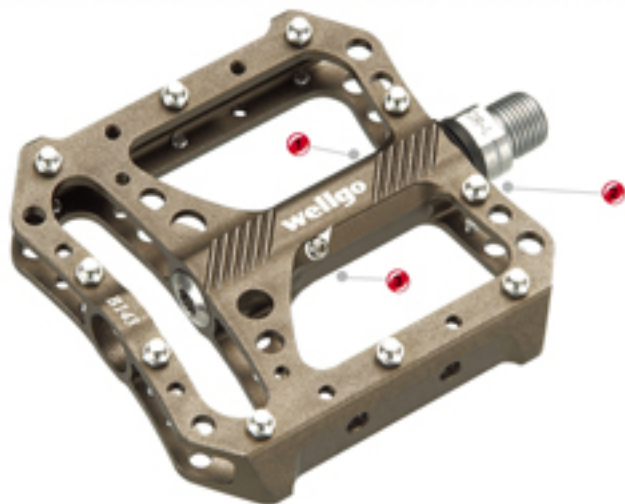
B137B PLATFORM

BODY: Magnesium, painted color
SPINDLE: Cr-Mo CNC machined **BEARING:** DU / Sealed
SIZE: 107.5 x 94 x 32(mm) **WEIGHT:** Mg: 362g/pr / Al: 432g/pr
PIN: Replaceable pin
OPTION: Ball bearing version as B137, mold pin.
ORIGIN: Taiwan



B144 PLATFORM

BODY: Aluminum 6061 extruded, CNC machined
SPINDLE: Cr-Mo CNC machined **BEARING:** DU / Sealed
SIZE: 104 x 100 x 26.6(mm) **WEIGHT:** 380 g/pr
PIN: Replaceable pin **ORIGIN:** Taiwan



B143 PLATFORM

BODY: Aluminum 6061 extruded, CNC machined
SPINDLE: Cr-Mo CNC machined **BEARING:** DU / Sealed
SIZE: 107.3 x 100 x 26.1(mm) **WEIGHT:** 384 g/pr
PIN: Replaceable pin **ORIGIN:** Taiwan

- Lighter and Larger platform with patented on shape design.
- Unique surface offers user the customize pins location.
- Grease hole design for easily maintenance.



B150 PLATFORM

BODY: Aluminum 6061 extruded, CNC machined
SPINDLE: Cr-Mo CNC machined **BEARING:** DU / Sealed
SIZE: 104.5 x 100 x 26(mm) **WEIGHT:** 380 g/pr
PIN: Replaceable pin **ORIGIN:** Taiwan



C134 TREKKING

BODY: Aluminum 6061 extruded, CNC machined
SPINDLE: Cr-Mo CNC machined **BEARING:** DU / Sealed
SIZE: 92.6 x 90.1 x 28(mm) **WEIGHT:** 306g/pr
ORIGIN: Taiwan



C139 TREKKING

BODY: Aluminum 6061 extruded, CNC machined
SPINDLE: Cr-Mo CNC machined **BEARING:** DU / Sealed
SIZE: 89 x 60 x 21.6(mm) **WEIGHT:** 212 g/pr
ORIGIN: Taiwan



C140 TREKKING

BODY: Aluminum 6061 extruded, CNC machined
SPINDLE: Cr-Mo CNC machined **BEARING:** DU / Sealed
SIZE: 89.8 x 61.5 x 22(mm) **WEIGHT:** 220 g/pr
ORIGIN: Taiwan



F147 FOLDING

BODY: Plastic
CAGE: Aluminum, barrel
SPINDLE: Cr-Mo
SIZE: 106 x 81 x 30(mm) **WEIGHT:** 432 g/pr
ORIGIN: Taiwan



F154 FOLDING

BODY: TRANSLUCENT COLOR
CAGE: TRANSLUCENT COLOR
SPINDLE: Cr-Mo
SIZE: 103 x 72 x 29(mm) **WEIGHT:** 334 g/pr
ORIGIN: Taiwan



- Unique angling front clamp design helps the pedal body away from the cleat while operation to reduce the friction.
- With waterproof seal.

M094 MTB

BODY: Aluminum, ED black or painted color
Magnesium body, painted color

SPINDLE: Cr-Mo **BEARING:** Ball bearing

CLEAT: 98A or Shimano 51 compatible

SIZE: 80.9 x 65.3 x 33.8(mm) **WEIGHT:** 314 g/pr

OPTION: Sealed bearing version as M094B

ORIGIN: Taiwan

W-01 MTB

BODY: Aluminum, ED black or painted color
Magnesium body, painted color

SPINDLE: Cr-Mo CNC machined or Ti

BEARING: DU / Sealed

CLEAT: 98A or Shimano 51 compatible

SIZE: 80.1 x 64.5 x 30.6(mm) **WEIGHT:** 300 g/pr

ORIGIN: Taiwan

WAM-M19 MTB

BODY: Aluminum, ED black or painted color

SPINDLE: Cr-Mo CNC machined or Ti

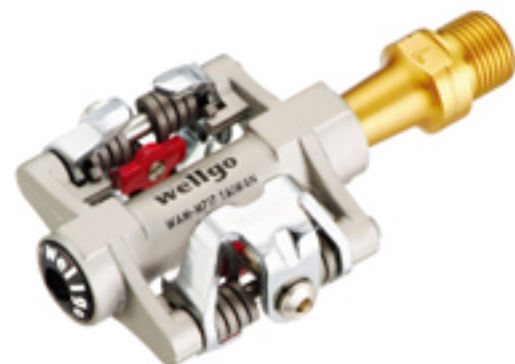
BEARING: DU / Sealed

CLEAT: 98A or Shimano 51 compatible

SIZE: 79.8 x 59.8 x 30.1(mm)

WEIGHT: Ti: 252 g/pr / Cr: 300 g/pr

ORIGIN: Taiwan



WAM-M717 MTB

BODY: Cr-Mo investment, painted color

SPINDLE: Cr-Mo CNC machined or Ti

BEARING: DU / Sealed

CLEAT: 98A or Shimano 51 compatible

SIZE: 83.6 x 57.8 x 29.3(mm)

WEIGHT: Ti: 298 g/pr / Cr: 354 g/pr

ORIGIN: Taiwan

WPD-801 MTB

BODY: Aluminum, ED black or painted color

SPINDLE: Cr-Mo CNC machined or Ti

BEARING: DU / Sealed

CLEAT: 98A or Shimano 51 compatible

SIZE: 82.4 x 66.8 x 32.8(mm)

WEIGHT: Ti: 306 g/pr / Cr: 366 g/pr

OPTION: Magnesium version as MG-18 **ORIGIN:** Taiwan

WAM-M18 MTB

BODY: Cr-Mo investment, ED black

SPINDLE: Cr-Mo **BEARING:** Ball bearing

CLEAT: 98A or Shimano 51 compatible

SIZE: 78.6 x 61.7 x 31.5(mm) **WEIGHT:** 362 g/pr

ORIGIN: Taiwan

- Patent design for one piece forming clamp and body.
- Use 6 mm adjusted tool for variable levels tension adjusted.



WAM-M919 MTB

BODY: Aluminum, ED black or painted color

SPINDLE: Cr-Mo **BEARING:** Ball bearing

CLEAT: 98A or Shimano 51 compatible

SIZE: 83.8 x 58.9 x 35.5(mm) **WEIGHT:** 340 g/pr

ORIGIN: Taiwan



WPD-823 MTB

BODY: Aluminum, ED black or painted color

SPINDLE: Cr-Mo **BEARING:** Ball bearing

CLEAT: 98A or Shimano 51 compatible

SIZE: 81.4 x 63 x 34.5(mm) **WEIGHT:** 360 g/pr

ORIGIN: Taiwan



M079 MTB

BODY: Aluminum 6061 extruded, CNC machined, anodized

SPINDLE: Cr-Mo CNC machined **BEARING:** DU / Sealed

SIZE: 100.8 x 60 x 24.4(mm) **WEIGHT:** 232 g/pr

ORIGIN: Taiwan



M111 MTB

BODY: Aluminum forged, anodized

SPINDLE: Cr-Mo CNC machined **BEARING:** DU / Sealed

SIZE: 99 x 61 x 18(mm) **WEIGHT:** 228 g/pr

ORIGIN: Taiwan



LU-C28 MTB

BODY: Aluminum forged, anodized

SPINDLE: Cr-Mo CNC machined **BEARING:** DU / Sealed

SIZE: 101.1 x 64.4 x 21.5(mm) **WEIGHT:** 276 g/pr

ORIGIN: Taiwan



M-20 MTB

BODY: Aluminum, barrel silver

CAGE: Aluminum, ED black

SPINDLE: Cr-Mo CNC machined **BEARING:** DU / Sealed

SIZE: 101.1 x 63 x 24(mm) **WEIGHT:** 224 g/pr

ORIGIN: Taiwan & China



M-21 MTB

BODY: Aluminum, barrel silver **CAGE:** Aluminum, ED black
SPINDLE: Cr-Mo **SIZE:** 100.7 x 63 x 24(mm)
WEIGHT: 236 g/pr
OPTION: Sealed bearing version as M-21B
ORIGIN: Taiwan & China



LU-C27G MTB

BODY: Aluminum, ED black with CNC machined
SPINDLE: Cr-Mo **SIZE:** 101.5 x 63.3 x 23.3(mm)
WEIGHT: 270 g/pr
OPTION: Sealed bearing version as LU-C27GB
ORIGIN: Taiwan



M085 MTB

BODY: Plastic **CAGE:** Aluminum or steel, ED black
SPINDLE: Cr-Mo **SIZE:** 99 x 63 x 24(mm)
WEIGHT: 216 g/pr **ORIGIN:** Taiwan & China



Clip in system



Plastic body with easy clip in Mounted patent design for toe clip,
 Size available in XS, S, M for toe clip.

M141 MTB

BODY: Plastic
CAGE: Aluminum or steel, ED black
SPINDLE: Cr-Mo **SIZE:** 105.3 x 63 x 24(mm)
WEIGHT: 236 g/pr **ORIGIN:** Taiwan & China



- ① One piece plastic body with easy clip in mounted system,
- ② Plastic formula with excellent strength and ductility .

M113 MTB

BODY: One piece Plastic **SPINDLE:** Cr-Mo
SIZE: 103.5 x 78 x 25.5(mm)
WEIGHT: 206 g/pr **ORIGIN:** Taiwan & China



M095 MTB

BODY: One piece Plastic **SPINDLE:** Cr-Mo
SIZE: 103 x 76 x 25.5(mm)
WEIGHT: 202 g/pr **ORIGIN:** China



① Use 3mm adjusted tool for variable levels tension adjusted.

② Offers 3 different degree cleat for consumers option

R096B ROAD

BODY: Aluminum, ED black or painted color

Magnesium body, painted color

SPINDLE: Cr-Mo CNC machined **BEARING:** Needle / Sealed

CLEAT: RC7A / B / C, LOOK "KEO" cleat compatible **SIZE:** 81 x 87 x 33(mm)

WEIGHT: 326 g/pr **OPTION:** Ball bearing version as R096 **ORIGIN:** Taiwan



① Magnesium body with hand-made carbon fiber wrap.

② Translucent indicator window, easy to see through the selected adjustment tension.

CR-1 ROAD

BODY: Magnesium, with carbon fiber wrap **SPINDLE:** Cr-Mo CNC machined or Ti

BEARING: Needle / Sealed **CLEAT:** RC-5 / RC-6, LOOK "ARC" cleat compatible

SIZE: 85 x 93.4 x 33.2(mm) **WEIGHT:** Ti: 262 g/pr / Cr: 314 g/pr

ORIGIN: Taiwan



MG-9 ROAD

BODY: Magnesium, painted color

SPINDLE: Cr-Mo CNC machined or Ti

BEARING: DU / Sealed

CLEAT: RC-5 / RC-6, LOOK "ARC" cleat compatible

SIZE: 85.2 x 95.8 x 34.2(mm)

WEIGHT: Ti: 262 g/pr / Cr: 312 g/pr

ORIGIN: Taiwan



W-40 ROAD

BODY: Aluminum, ED black or painted color

SPINDLE: Cr-Mo **BEARING:** Ball bearing

CLEAT: RC-5 / RC-6, LOOK "ARC" cleat compatible

SIZE: 85 x 92 x 33(mm) **WEIGHT:** 296 g/pr

OPTION: Sealed bearing version as W-40B **ORIGIN:** Taiwan



W-43 ROAD

BODY: Aluminum, barrel silver or painted color

SPINDLE: Cr-Mo

CLEAT: 98A or Shimano 51 compatible

SIZE: 90 x 100 x 32.5(mm) **WEIGHT:** 396 g/pr

ORIGIN: Taiwan



MG-8 ROAD

BODY: Magnesium, painted color
SPINDLE: Cr-Mo CNC machined or Ti
BEARING: DU / Sealed
CLEAT: 98A or Shimano 51 compatible
SIZE: 79.8 x 64.8 x 27.8(mm)
WEIGHT: Ti: 200 g/pr / Cr: 240 g/pr **ORIGIN:** Taiwan



RC-713 ROAD

BODY: Aluminum, polished or painted color
SPINDLE: Cr-Mo CNC machined or Ti
BEARING: DU / Sealed
CLEAT: 98A or Shimano 51 compatible
SIZE: 79.8 x 65.3 x 27.9(mm)
WEIGHT: Ti: 252 g/pr / Cr: 310 g/pr **ORIGIN:** Taiwan



W-44 ROAD

BODY: Aluminum, painted color or ED black
 Magnesium body, painted color
SPINDLE: Cr-Mo **SIZE:** 82.8 x 76 x 46.8(mm)
WEIGHT: 318 g/pr **CLEAT:** 98A or Shimano 51 compatible
OPTION: Sealed bearing version as W-44B
ORIGIN: Taiwan



W-41 ROAD

BODY: Cr-Mo investment, ED black or painted color
SPINDLE: Cr-Mo **CLEAT:** 98A or Shimano 51 compatible
SIZE: 78.6 x 54.2 x 24.3(mm) **WEIGHT:** 258 g/pr
OPTION: Sealed bearing version as W-41B
ORIGIN: Taiwan



R074 ROAD

BODY: Aluminum 6061 extruded, CNC machined
SPINDLE: Cr-Mo CNC machined
BEARING: DU / Sealed **SIZE:** 91.5 x 60 x 21.6(mm)
WEIGHT: 228 g/pr **ORIGIN:** Taiwan



WR-1 ROAD

BODY: Aluminum 6061 extruded, CNC machined
SPINDLE: Cr-Mo machined **BEARING:** DU / Sealed
SIZE: 93 x 61.5 x 22(mm) **WEIGHT:** 224 g/pr
ORIGIN: Taiwan



LU-C16 ROAD

BODY: Aluminum 6061 extruded, CNC machined

SPINDLE: Cr-Mo machined or Ti **BEARING:** DU / Sealed

SIZE: 92.9 x 61.5 x 22(mm) **WEIGHT:** Ti: 226 g/pr / Cr: 280 g/pr

ORIGIN: Taiwan



R090 ROAD

BODY: Plastic mounted toe-clip & strap

SPINDLE: Cr-Mo **SIZE:** 99 x 79.8 x 24(mm)

WEIGHT: 206 g/pr **ORIGIN:** Taiwan & China



R110 ROAD

BODY: Aluminum, barrel silver **CAGE:** Aluminum, ED black

SPINDLE: Cr-Mo CNC machined **BEARING:** DU / Sealed

SIZE: 88 x 68.6 x 29(mm) **WEIGHT:** 236 g/pr

ORIGIN: Taiwan



R125 ROAD

BODY: Plastic **CAGE:** Aluminum, ED black

SPINDLE: Cr-Mo **SIZE:** 104.6 x 63 x 24(mm)

WEIGHT: 212 g/pr **ORIGIN:** Taiwan & China



R126 ROAD

BODY: Aluminum, barrel silver **CAGE:** Aluminum, ED black

SPINDLE: Cr-Mo **SIZE:** 104.6 x 63 x 24(mm)

WEIGHT: 232 g/pr

OPTION: Sealed bearing version as R126B

ORIGIN: Taiwan & China



- ① One piece aluminum Classic cage shape, fashion but also elegant to mount steel toeclip and leather strap.
- ② For Track, Road, Trekking and Fixed Gear.

R104 ROAD

BODY: Aluminum, barrel silver **CAGE:** Aluminum, ED black

SPINDLE: Cr-Mo **BEARING:** Ball bearing **SIZE:** 104.6 x 65.6 x 30.8(mm)

WEIGHT: 254 g/pr **OPTION:** Sealed bearing version as R104B

ORIGIN: Taiwan



- ① Available with steel toeclip covered with leather to prevent shoes from scratch. Leather available in black and brown.
- ② 2 Pieces cut cage design offers premium ground clearance.

R025 ROAD

BODY: Aluminum, barrel silver **CAGE:** Aluminum, ED black

SPINDLE: Cr-Mo **BEARING:** Ball bearing **SIZE:** 90.1 x 64.8 x 27.7(mm)

WEIGHT: 238 g/pr **OPTION:** Sealed bearing version as R025B

ORIGIN: Taiwan



W-5

W5 Single leather strap

White

Brown



W-6

W-6 Double leather strap

White

Brown



MT-16

Steel toe-clip with cp finished
Sizs: M / L

MT-20

Steel toe-clip with cp finished
Sizs: M / L

MT-21

Steel toe-clip with cp finished
Sizs: M / L



Other

Options

Color: Blue / purple / Red / Yellow / Green / Pewter / Tangerine



C099 CITY / TREKKING

BODY: Aluminum, barrel silver **SPINDLE:** Cr-Mo
CLEAT: 98A or Shimano 51 compatible **SIZE:** 93.5 x 66 x 28.5(mm)
WEIGHT: 320 g/pr **OPTION:** Sealed bearing version as C0998
ORIGIN: Taiwan



C002 CITY / TREKKING

BODY: Aluminum, barrel silver **CAGE:** Aluminum, anodized
SPINDLE: Cr-Mo **CLEAT:** 98A or Shimano 51 compatible
SIZE: 101.7 x 65.4 x 29.8(mm) **WEIGHT:** 372 g/pr
OPTION: Sealed bearing version as C0028 **ORIGIN:** Taiwan



WPD-M17C CITY / TREKKING

BODY: Aluminum, barrel silver
CAGE: Aluminum, anodized **SPINDLE:** Cr-Mo CNC machined **BEARING:** DU / Sealed
CLEAT: 98A or Shimano 51 compatible
SIZE: 100.8 x 65.2 x 27.2(mm) **WEIGHT:** 352 g/pr
ORIGIN: Taiwan



WPD-95B CITY / TREKKING

BODY: Aluminum, barrel silver **CAGE:** Aluminum, anodized
SPINDLE: Cr-Mo CNC machined **CLEAT:** 98A or Shimano 51 compatible
SIZE: 101.7 x 65.4 x 29.8(mm) **WEIGHT:** 372 g/pr
ORIGIN: Taiwan



C105 TREKKING

BODY: Aluminum 6061 extruded, CNC machined
SPINDLE: Cr-Mo CNC machined
BEARING: DU / Sealed **SIZE:** 86.5 x 80 x 26(mm)
WEIGHT: 326 g/pr **PIN:** Replaceable R-pin
ORIGIN: Taiwan



C040 URBAN / TREKKING

BODY: Aluminum 6061 extruded, CNC machined
SPINDLE: Cr-Mo CNC machined
BEARING: 3 Sealed **SIZE:** 90.3 x 90 x 27(mm)
WEIGHT: 296 g/pr **PIN:** Replaceable R-pin
ORIGIN: Taiwan



C091 URBAN / TREKKING

BODY: Aluminum 6061 extruded, CNC machined
SPINDLE: Cr-Mo CNC machined
BEARING: 3 Sealed **SIZE:** 92.6 x 90 x 27.4(mm)
WEIGHT: 286 g/pr **PIN:** Replaceable R-pin
ORIGIN: Taiwan



C135 CITY / TREKKING

BODY: Aluminum 6061 extruded, CNC machined
SPINDLE: Cr-Mo CNC machined
BEARING: Sealed / Sealed **SIZE:** 92.1 x 90 x 28.5(mm)
WEIGHT: 290 g/pr **PIN:** Replaceable R-pin
ORIGIN: Taiwan



C129 CITY

BODY: Aluminum 6061 extruded, CNC machined
SPINDLE: Cr-Mo CNC machined
BEARING: DU / Sealed **SIZE:** 88.6 x 60 x 21.6(mm)
WEIGHT: 250 g/p **ORIGIN:** Taiwan



C006 CITY

BODY: Aluminum 6061 extruded, CNC machined
SPINDLE: Cr-Mo CNC machined
BEARING: DU / Sealed **SIZE:** 95 x 61.5 x 22.9(mm)
WEIGHT: 214 g/pr **ORIGIN:** Taiwan



C089 CITY / TREKKING

BODY: Aluminum, barrel silver **CAGE:** Aluminum, Ed black
SPINDLE: Cr-Mo **SIZE:** 86.7 x 63.2 x 20(mm)
WEIGHT: 232 g/pr
OPTION: Sealed bearing version as C089B
ORIGIN: Taiwan & China



C122 CITY / COMFORT

BODY: Aluminum, barrel silver with kraton top
SPINDLE: Cr-Mo
SIZE: 100 x 83 x 25(mm) **WEIGHT:** 354 g/pr
OPTION: Sealed bearing version as C122B
ORIGIN: Taiwan



C016 CITY / COMFORT

BODY: Aluminum barrel silver with kraton top
SPINDLE: Cr-Mo
SIZE: 106 x 91 x 30(mm) **WEIGHT:** 460 g/pr
OPTION: Sealed bearing version as C016B
ORIGIN: Taiwan



C127 TREKKING

BODY: Plastic **CAGE:** Aluminum or steel, ED black
SPINDLE: Cr-Mo **SIZE:** 106.3 x 63 x 24(mm)
WEIGHT: 224 g/pr
ORIGIN: Taiwan & China



C128 TREKKING

BODY: Aluminum, barrel silver
CAGE: Aluminum or steel, ED black **SPINDLE:** Cr-Mo
SIZE: 106.3 x 63 x 24(mm) **WEIGHT:** 246 g/pr
OPTION: Sealed bearing version as C128B
ORIGIN: Taiwan & China



C136 TREKKING

BODY: One piece plastic **SPINDLE:** Cr-Mo
SIZE: 109.3 x 79 x 27.2(mm) **WEIGHT:** 286 g/pr
ORIGIN: Taiwan



C-32B CITY / COMFORT

BODY: Aluminum barrel silver with kraton top

SPINDLE: Cr-Mo CNC machined **BEARING:** DU / Sealed

SIZE: 102.9 x 69.6 x 24.2(mm) **WEIGHT:** 324 g/pr

OPTION: Ball bearing version as C-32

ORIGIN: Taiwan



C021 CITY / COMFORT

BODY: Aluminum body with plastic cage overmolded
kraton top

SPINDLE: Cr-Mo **SIZE:** 102.2 x 76 x 23.7(mm)

WEIGHT: 268 g/pr

OPTION: Sealed bearing version as C021B **ORIGIN:** Taiwan



C098 CITY / COMFORT

BODY: Aluminum body with plastic cage overmolded
kraton top

SPINDLE: Cr-Mo **SIZE:** 103 x 79.5 x 24(mm)

WEIGHT: 270 g/pr

OPTION: Sealed bearing version as C098B

ORIGIN: Taiwan



C097 CITY / COMFORT

BODY: Plastic with kraton top **SPINDLE:** Cr-Mo

SIZE: 103 x 79.5 x 24(mm) **WEIGHT:** 244 g/pr

ORIGIN: Taiwan



IN HOUSE COLOR



OUTDOOR COLOR

2708A
+
#19



3945A
+
2708B



The UV pedal will be changed the color under UV ray or sunlight and without the element it will return back to the original color.

Warning:

(1) Prohibited to have the UV pedal to be displayed under the spotlight for long period, which may destroy the UV element and reduce the function.

(2) Color-changing function will decrease if the pedal continuous been exposed under the UV light for 336 hours



WAM-D10 DOWNHILL

BODY: Magnesium, painted color **SPINDLE:** Cr-Mo CNC machined
BEARING: Needle / DU / Sealed **CLEAT:** 98A or Shimano 51 compatible
SIZE: 109.1 x 94.7 x 33.8(mm) **WEIGHT:** 516 g/pr
ORIGIN: Taiwan



W-70 DOWNHILL

BODY: Aluminum with CNC machined **SPINDLE:** Cr-Mo CNC machined
BEARING: DU / Sealed **CLEAT:** 98A or Shimano 51 compatible
SIZE: 104 x 89 x 30.1(mm) **WEIGHT:** 512 g/pr
ORIGIN: Taiwan



B131 PLATFORM

BODY: Aluminum 6061 extruded, CNC machined
SPINDLE: Cr-Mo CNC machined
BEARING: DU / Sealed **SIZE:** 104 x 100 x 25.9(mm)
WEIGHT: 354 g/pr **PIN:** Replaceable R-pin
ORIGIN: Taiwan



B132 PLATFORM

BODY: Aluminum 6061 extruded, CNC machined
SPINDLE: Cr-Mo CNC machined
BEARING: DU / Sealed **SIZE:** 103.5 x 100 x 25(mm)
WEIGHT: 352 g/pr **PIN:** Replaceable R-pin
ORIGIN: Taiwan



B103 PLATFORM

BODY: Aluminum 6061 extruded, CNC machined
SPINDLE: Cr-Mo CNC machined
BEARING: DU / Sealed **SIZE:** 107 x 100 x 26.3(mm)
WEIGHT: 374 g/pr **PIN:** Replaceable R-pin
ORIGIN: Taiwan



B114 PLATFORM

BODY: Aluminum 6061 extruded, CNC machined **SPINDLE:** Cr-Mo CNC machined

BEARING: DU / Sealed **SIZE:** 107.3 x 100 x 25.9(mm)

WEIGHT: 386 g/pr **PIN:** Replaceable R-pin

ORIGIN: Taiwan



B118 PLATFORM

BODY: Aluminum 6061 extruded, CNC machined **SPINDLE:** Cr-Mo CNC machined

BEARING: DU / Sealed **SIZE:** 103.6 x 100 x 24.2(mm)

WEIGHT: 342 g/pr **PIN:** Replaceable R-pin

ORIGIN: Taiwan



B117 PLATFORM

BODY: Aluminum 6061 extruded, CNC machined

SPINDLE: Cr-Mo CNC machined

BEARING: DU / Sealed **SIZE:** 107.4 x 100 x 24.5(mm)

WEIGHT: 406 g/pr **PIN:** Replaceable U-pin

ORIGIN: Taiwan



B092 PLATFORM

BODY: Aluminum 6061 extruded, CNC machined

SPINDLE: Cr-Mo CNC machined

BEARING: DU / Sealed **SIZE:** 93 x 100 x 25.8(mm)

WEIGHT: 341 g/pr **PIN:** Replaceable R-pin

ORIGIN: Taiwan



B065 PLATFORM

BODY: Aluminum 6061 extruded, CNC machined

SPINDLE: Cr-Mo CNC machined

BEARING: DU / Sealed **SIZE:** 104.5 x 100 x 24(mm)

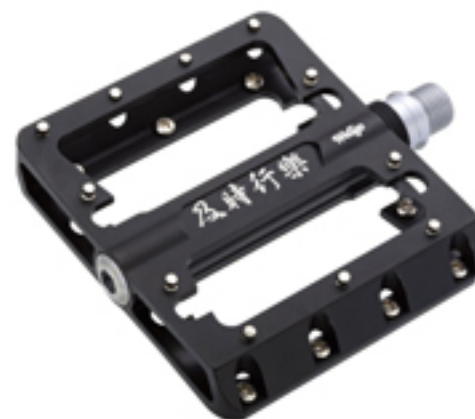
WEIGHT: 400 g/pr **PIN:** Replaceable U-pin

ORIGIN: Taiwan



B030 BMX / DOWNHILL

BODY: Aluminum 6061 extruded, CNC machined
SPINDLE: Cr-Mo CNC machined **BEARING:** DU / Sealed
SIZE: 109.5 x 100 x 21.9(mm) **WEIGHT:** 390 g/pr
PIN: Replaceable pin **ORIGIN:** Taiwan



B060 BMX

BODY: Aluminum 6061 extruded, CNC machined
SPINDLE: Cr-Mo CNC machined **BEARING:** DU / Sealed
SIZE: 103 x 100 x 23.6(mm) **WEIGHT:** 410 g/pr
PIN: Replaceable Pin **ORIGIN:** Taiwan



B064 BMX

BODY: Aluminum 6061 extruded, CNC machined **SPINDLE:** Cr-Mo CNC machined
BEARING: DU / Sealed **SIZE:** 104.8 x 100 x 23.6(mm)
WEIGHT: 418 g/pr **PIN:** Replaceable U-pin
ORIGIN: Taiwan



LU-A52 BMX / FREERIDE / DOWNHILL

BODY: MG-52 Magnesium, painted color
 LU-A52 Aluminum, ED black
SPINDLE: Cr-Mo CNC machined
BEARING: DU / Sealed **SIZE:** 109.5 x 106 x 28.4(mm)
WEIGHT: MG-52: 426 g/pr / LU-A52: 540 g/pr **PIN:** Replaceable T-pin
OPTION: Ball bearing version as LU-A52A or Sparking plate design **ORIGIN:** Taiwan



MG-1 BMX

BODY: Magnesium, painted color **SPINDLE:** Cr-Mo CNC machined
BEARING: Sealed / DU bushing **SIZE:** 114.6 x 106.2 x 30.8(mm)
WEIGHT: 376 g/pr **PIN:** Replaceable pin
ORIGIN: Taiwan



B087B BMX / DOWNHILL

BODY: Aluminum, barrel silver ; Magnesium body, painted color
SPINDLE: Cr-Mo CNC machined **BEARING:** DU / Sealed
SIZE: 109 x 100.5 x 27(mm) **WEIGHT:** 422 g/pr
OPTION: Ball bearing version as B087
ORIGIN: Taiwan & China



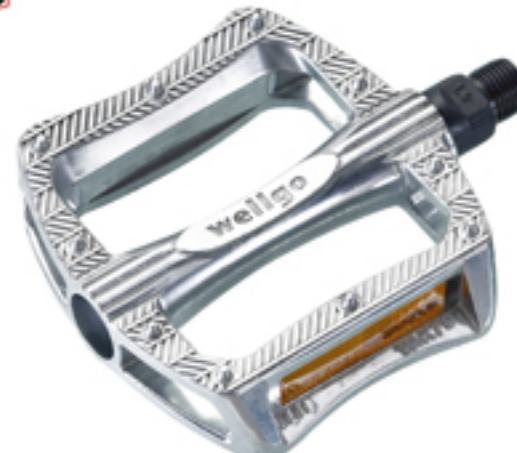
B102B BMX / DOWNHILL

BODY: Aluminum, barrel silver
 Magnesium body, painted color
SPINDLE: Cr-Mo CNC machined
SIZE: 113.5 x 102 x 27.6(mm) **WEIGHT:** 412 g/pr
OPTION: Ball bearing version as B102
ORIGIN: Taiwan



B017 BMX

BODY: Aluminum, barrel silver, mold pin
SPINDLE: Cr-Mo
SIZE: 108 x 102 x 28.8(mm) **WEIGHT:** 484 g/pr
OPTION: Sealed bearing version as B017B
ORIGIN: Taiwan & China



B121 PLATFORM

BODY: Aluminum, barrel silver, mold pin **SPINDLE:** Cr-Mo
SIZE: 112 x 100 x 30.5(mm) **WEIGHT:** 479 g/pr
ORIGIN: Taiwan
AVAILABLE: Magnesium body, replaceable pin
 Sealed bearing version as B121B



B123 PLATFORM

BODY: Plastic

SPINDLE: Cr-Mo **SIZE:** 111 x 98.7 x 26.5(mm)

WEIGHT: 288 g/pr

ORIGIN: Taiwan



B133 PLATFORM

BODY: Aluminum, barrel silver, mold pin **SPINDLE:** Cr-Mo

SIZE: 105.4 x 90.2 x 28(mm) **WEIGHT:** 410 g/pr

OPTION: Sealed bearing version as B1338

ORIGIN: Taiwan



B088 BMX

BODY: Plastic **SPINDLE:** Cr-Mo

SIZE: 114 x 102 x 29(mm) **WEIGHT:** 306 g/pr

ORIGIN: Taiwan & China



Rubine Red

B108RP PLATFORM

BODY: TRANSLUCENT COLOR **SPINDLE:** Cr-Mo

SIZE: 112 x 102.4 x 32.5(mm) **WEIGHT:** 388 g/pr

PIN: Replaceable R-pin

ORIGIN: Taiwan



154C

B108RN PLATFORM

BODY: NYLON WITH FIBER **SPINDLE:** Cr-Mo

SIZE: 112 x 102.4 x 31.5(mm) **WEIGHT:** 406 g/pr

PIN: Replaceable R-pin

ORIGIN: Taiwan



IN HOUSE COLOR



OUTDOOR COLOR

2708A



3945B



#19



#14

**B107UV PLATFORM****BODY:** TRANSLUCENT COLOR**SPINDLE:** Cr-Mo **SIZE:** 112 x 102.4 x 28.4(mm)**WEIGHT:** 320 g/pr**ORIGIN:** Taiwan

576C

B107N PLATFORM**BODY:** NYLON WITH FIBER**SPINDLE:** Cr-Mo**SIZE:** 112 x 102.4 x 28.4(mm)**WEIGHT:** 398 g/pr**ORIGIN:** Taiwan

291C



347C

B107P PLATFORM**BODY:** TRANSLUCENT COLOR**SPINDLE:** Cr-Mo**SIZE:** 112 x 102.4 x 28.4(mm)**WEIGHT:** 372 g/pr**ORIGIN:** Taiwan

B107P



BLACK



CLEAR



RUBINE RED



154C



291C



364C

B107N



BLACK



186C



154C



292C



802C



528C

B108RP



BLACK



CLEAR



347C



364C



154C



528C



236C

neon colors



B110C



B100C



B802C



LUMINOUS



9F-348C

Available special color



CD-21KF
ILLUSION

CD-27-1
ROSE

CD-05CC
WOOD GRAIN

CDS-12
WHEATEN

CARBON

CD-130
VORTEX

CD-18-1
COLOR BUBBLE



CD-204
BRINDLE

CD-80
CAMOUFLAGE

YS-2081

TC-743

B103A
DUAL-ANODIZED

B118
TRI-ANODIZED

R-Pin COLOR OPTION



JY-001

JY-002

JY-023

JY-025

JY-004

JY-032

JY-007

Nylon toe-strap W-2



COLOR: BLACK / GREEN / BLUE / RED / GRAY / WHITE



FP-7 FOLDING

BODY: Aluminum, barrel silver **CAGE:** Aluminum, ED black

SPINDLE: Cr-Mo **SIZE:** 100 x 69.7 x 25.8(mm)

WEIGHT: 426 g/pr

ORIGIN: Taiwan



WPD-E003 EXERCISER (Toe Clip Mountable)

BODY: Aluminum, ED black **SPINDLE:** Cr-Mo **CLEAT:** 98A or Shimano 51 compatible

SIZE: 102.4 x 72.4 x 34.9(mm) **WEIGHT:** 646 g/pr

OPTION: W/O QBS or toe clip strap as E003

Sealed bearing version as WPD-E003B

ORIGIN: Taiwan



WPD-E14 EXERCISER (Toe Clip Mountable)

BODY: Aluminum barrel silver with kraton top **SPINDLE:** Cr-Mo

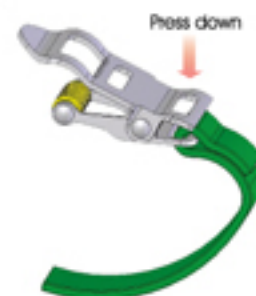
CLEAT: 98A or Shimano 51 compatible **SIZE:** 109 x 157 x 34.8(mm) **WEIGHT:** 866 g/pr

OPTION: W/O QBS or toe clip strap as E-14

Sealed bearing version as WPD-E14B

ORIGIN: Taiwan

Step to assemble the strap



1



2



3



4

Release after the strap goes through the buckle



MT-3

Double support design with instep guard MT-3 size L, MT-4 size S, MT-5 size M.



MT-6

Large supportive design with instep guard.



MT-10

Strapless toe-clip for technical or casual riding.



MT-14

Double supportive design with built-in reflector. MT-13 size M, MT-14 size L.



RP-1

Classic road racing toe-clip. Size: L, M



MT-11

Large supportive design with instep guard and built-in reflector. MT-11 size L, MT-12 size M.



MT-7

Mini toe-clip
Size: 82.7 x 53.8 (mm)



W-2

Nylon toe-strap
Color:
Black / Green / Blue /
Red / Grey / White



W-4

Nylon toe-strap with heavy-duty buckle.



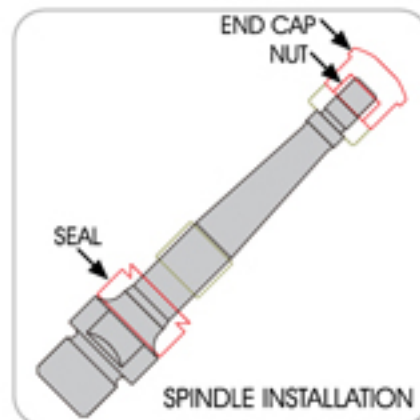
SC-1

Foot guard to any strap attachable.



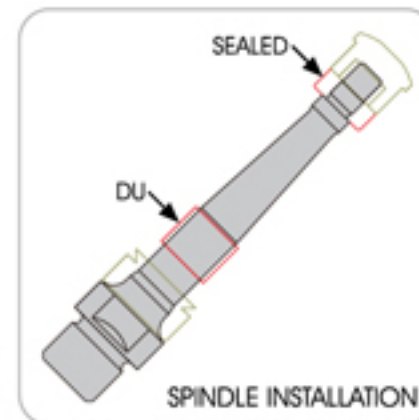
K001

Axle replacement kit.



K004

Bearing replacement kit.



**BOLT TYPE**

Bolt-on reflector set
for standard MTB pedals.
25 g/pr

**SNAP ON**

Snap-on reflector set

**LONG SNAP ON**

Extra-long snap-on
reflector set.

**98A-R**

Reflector for pedals
using 98A cleat
60 g/pr

**A-PIN**

28-B19 8mm
28-B7 6mm

**U-PIN**

28-11 11mm
28-12 12mm

**R-PIN**

33-R9 9mm

**V-PIN**

33-V9 9mm

**28-1****28-2**

28-1-WRENCH TOOL
28-2-WRENCH TOOL

**RC-4**

Cleat kit for WAM-R2 and R4.
4 degree float
40 g/pr

**RC-3**

Cleat kit for WAM-R2 and R4
4 degree float
45 g/pr

**98R**

Cleat kit
4 degree float
95 g/pr

**99A**

Cleat kit
4 degree float
95 g/pr

**98A-CLEAT**

Cleat kit with improved
mud clearance features.
4 degree float
73g/pr



RC-7A

Cleat kit for R096
9 degree lateral float
47 g/pr



RC-7B

Cleat kit for R096
6 degree lateral float
47 g/pr



RC-7C

Cleat kit for R096
0 degree lateral float
47 g/pr



RF-5A

Cleat kit for R096
9 degree lateral float
50 g/pr



RF-5B

Cleat kit for R096
6 degree lateral float
50 g/pr



RF-5C

Cleat kit for R096
0 degree lateral float
50 g/pr



RC-5

Cleat kit for WAM-R1,R3 and
MG-9, W40, CR-1.
9 degree lateral float
54 g/pr



RC-6

Cleat kit for WAM-R1,R3 and
MG-9, W40, CR-1.
3 degree lateral float
54 g/pr



WELLGO PEDAL'S CORP

NO.3, Kung 7th Road
Youth Industrial Park
43713 Tachia, Taichung Hsien Taiwan R.O.C
TEL: 886-4-26816991-5
FAX: 886-4-2681-6988,2681-6998
Http://www.wellgo.com.tw
E-MAIL: wellgo@ms7.hinet.net
wd@mail.wellgo.com.tw

WELLMAG TECHNOLOGY CO., LTD

NO.137, Ching Nine Road
Youth Industrial Park
43713 Tachia, Taichung Hsien
Taiwan R.O.C
TEL: 886-4-2682-2398-9
FAX: 886-4-2682-1909
Http://www.wellmag.com.tw
E-MAIL: wellmag1@mail.wellgo.com.tw

SHANGHAI FACTORY

NO.103 Yueh-Ho South Road
Economic & Technical Development Zone,
Kunshan, Jiangsu, China
TEL: 86-512-57701991-4
FAX: 86-512-57701995
E-MAIL: wellgo01@pub.sz.jsinfo.net

